

MONTHLY MEMBERSHIP PROGRESS REPORT

LOCATION VIRGINIA

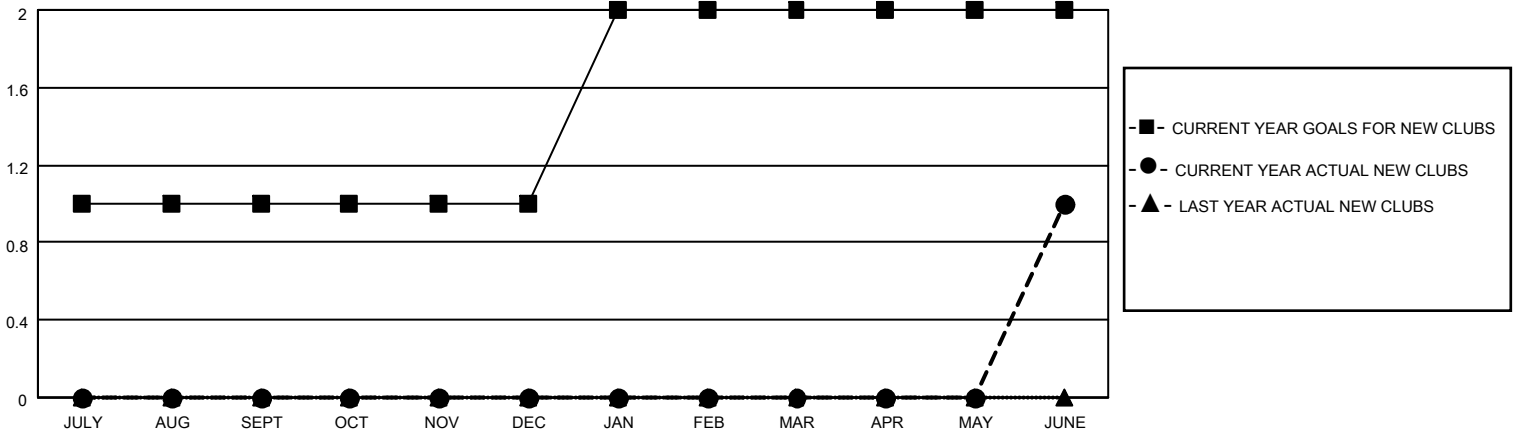
District 24 L

Results as of: 6/30/2021

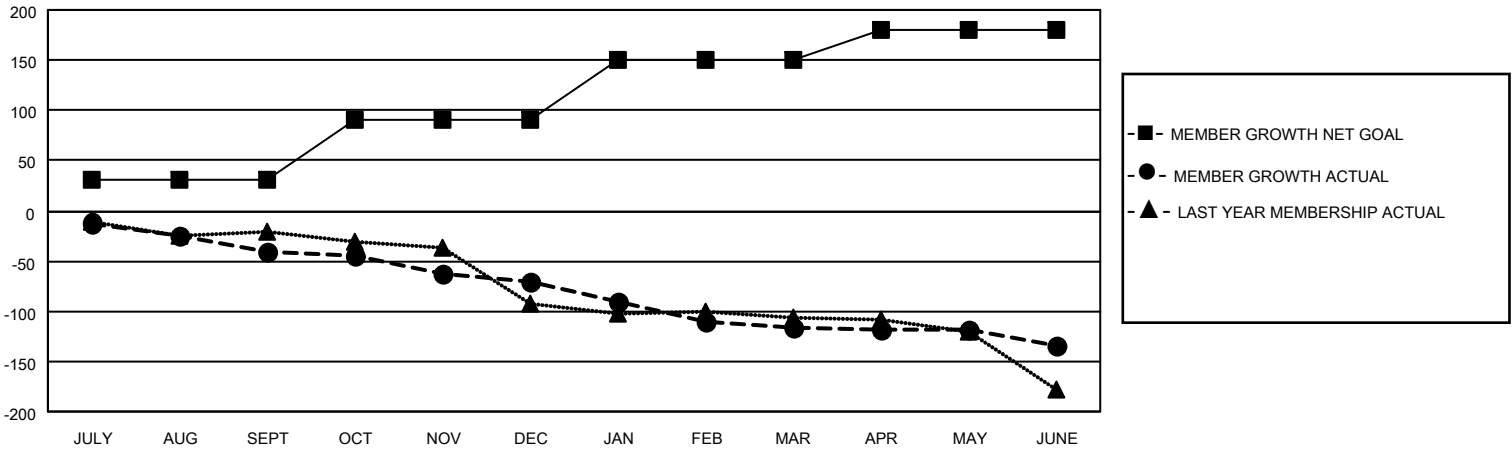
Clubs			
RESULTS FOR 2020-2021			
QUARTER	NEW CLUB GOAL	NEW CLUBS	DROPPED CLUBS
JULY/AUG/SEPT	1	0	1
OCT/NOV/DEC	0	0	0
JAN/FEB/MAR	1	0	2
APR/MAY/JUNE	0	1	0

Members			
RESULTS FOR 2020-2021			
QUARTER	MEMBER GROWTH NET GOAL	MEMBER GROWTH ACTUAL	DROPPED MEMBERS ACTUAL (including transfers)
JULY/AUG/SEPT	30	42	71
OCT/NOV/DEC	60	53	80
JAN/FEB/MAR	60	37	70
APR/MAY/JUNE	30	91	103

GOALS AND ACTUAL NEW CLUBS CUMULATIVE



GOALS AND ACTUAL MEMBERS CUMULATIVE



DROPPED CLUBS: 3

42 CLUBS OF 96 ADDED 1 OR MORE NEW MEMBERS

GENDER DISTRIBUTION

MALE 1,599 (64.14%)
FEMALE 894 (35.86%)

DROPPED MEMBERS

DECEASED	61
CLUB CANCELLED	10
OTHER	253
TOTAL	324

[CLICK HERE FOR CUMULATIVE MEMBERSHIP DATA](#)

TOTAL FAMILY UNIT MEMBERS	465
FAMILY MEMBERS PAYING HALF DUES	234